

Osaka International University  
sports business course  
project seminar



Regional revitalization that makes the best use of natural resources aiming for an exchange population. This walking course is pioneered by students and faculty. In some places there are things made by students. Also, you can feel nature. Please come!

Osaka International University  
preppers club



In heritage the senior course further improvements we are glad to have the general public participate in the event. It was hard to work in various weather conditions. There are still challenges. We will make a course with a constant smile.

Even in the mountains offline on your mobile you can be checked on the YAMAP.



**Loop Course**  
From/to Experience Plaza



**Course C**  
From Roadside station to Experience Plaza



For walking course under a specializes in tourism teacher set up a signpost that students thought.



Osaka International University  
Osaka International College  
〒570-8555  
6-21-57 Touda cho,  
Moriguchi City, Osaka



Minamiyamashiro  
Village Hall  
〒619-1411  
Kubo-14-1 Kitaokawara,  
Minamiyamashiro, Soraku  
District, Kyoto



Minamiyamashiro Village  
Experience Plaza  
〒619-1421  
106-1 Tayama Tsurugi,  
Minamiyamashiro-mura,  
Soraku-gun, Kyoto



Roadside Station Minami-Yamashiro  
village Kyoto Tea Country  
〒619-1411  
102 Tonoda, Kitaokawara,  
Minamiyamashiro Village,  
Soraku District, Kyoto

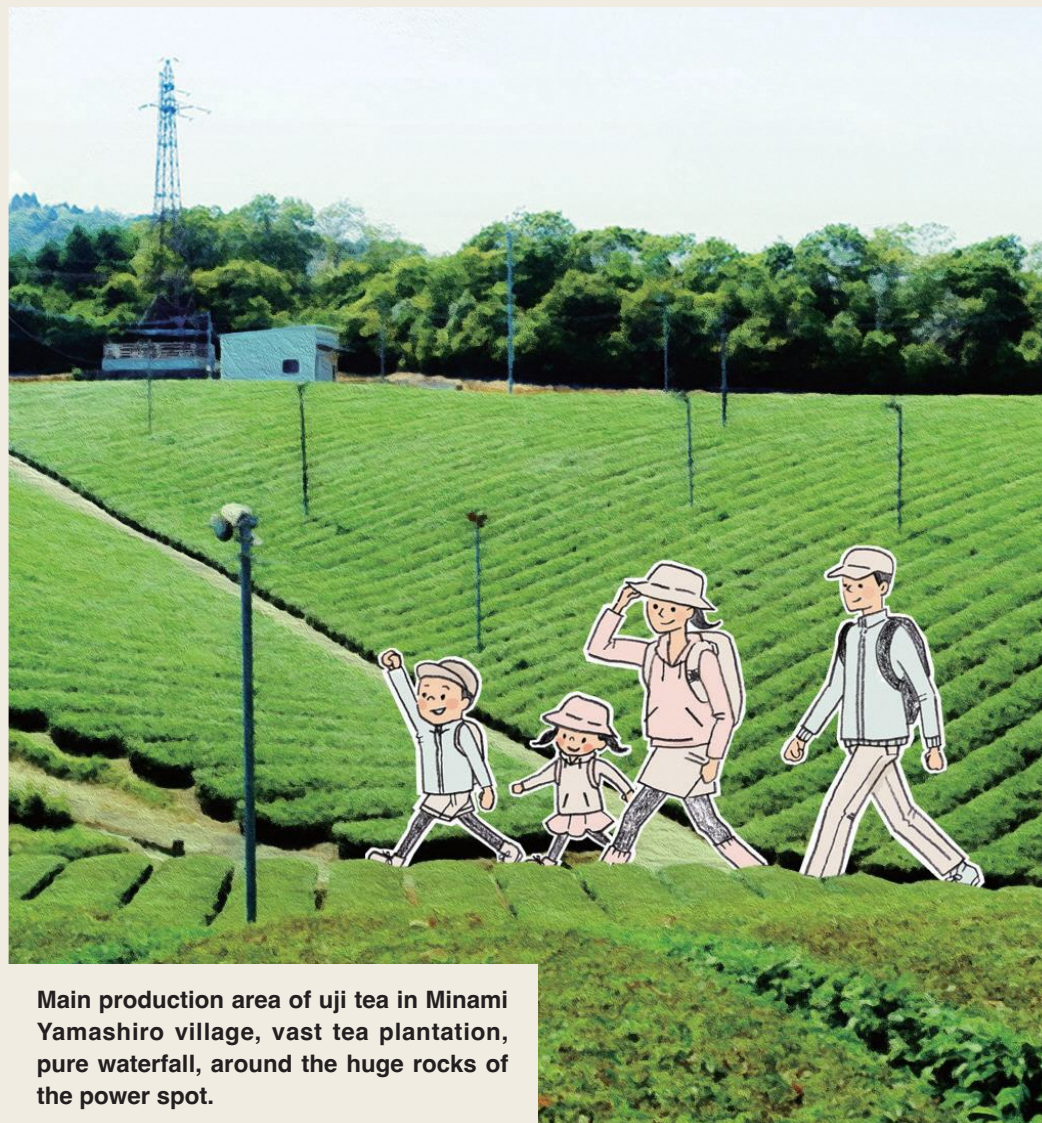


Fairfield by Marriott  
〒619-1411  
105 Tonoda, Kitaokawara,  
Minamiyamashiro Village,  
Soraku District, Kyoto

# 南山城村 森林ウォーキングコース

Minami Yamashiro village forest walking course

Made with  
Osaka International University/Junior college department /  
Government Office/LLC Minami Yamashiro sightseeing



Main production area of uji tea in Minami Yamashiro village, vast tea plantation, pure waterfall, around the huge rocks of the power spot.